



Industrial Enclosure

Series HANSE-SSR

TECHNICAL FEATURES

- OPERATING TEMPERATURE -15°C ... +60°C
- MATERIAL ABS
- PROTECTION DEGREE IP 66
- IMPACT RESISTANCE IK 06/07
- COLOUR RAL 7035
- STANDARD ACCESSORY Hinge cover screws
- APPROVAL

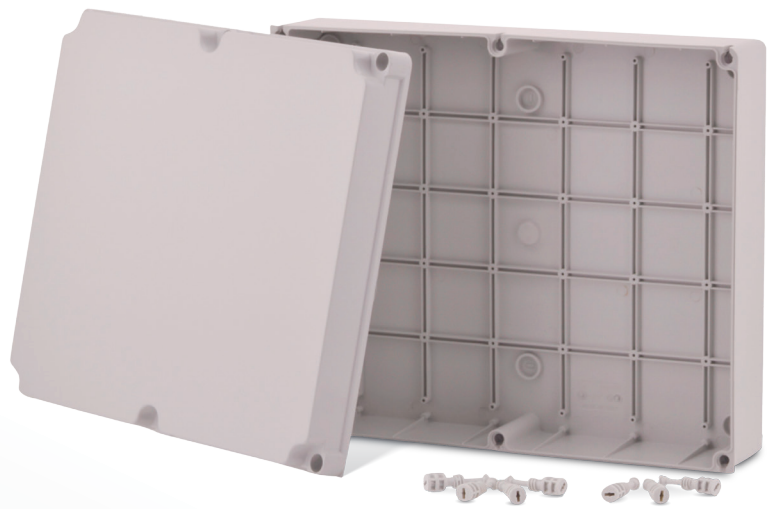


ACCESSORIES (optional, order separately)

- Wall mounting set
- Mounting plate

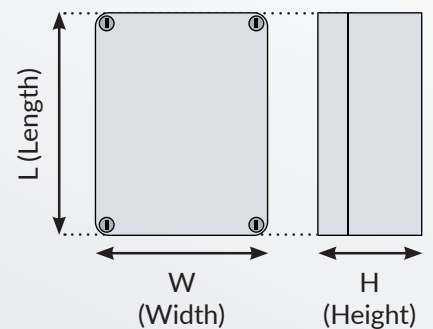


- Mounting rail



DIMENSIONS - Grey

MODEL	OUTER L x W x H (mm)	WEIGHT (kg)	IMPACT RESISTANCE
BXPSSR500	190 x 140 x 75	0,39	IK07
BXPSSR510	240 x 190 x 90	0,62	IK07
BXPSSR520	300 x 220 x 120	1,10	IK06
BXPSSR530	380 x 300 x 120	1,53	IK06
BXPSSR540	460 x 380 x 120	2,12	IK06



TECHNICAL FEATURES

- OPERATING TEMPERATURE -15°C ... +60°C
- MATERIAL Cover: Polycarbonate
Base: ABS
- PROTECTION DEGREE IP 66
- IMPACT RESISTANCE IK 06/07
- COLOUR RAL 7035
- STANDARD ACCESSORY Hinge cover screws
- APPROVAL

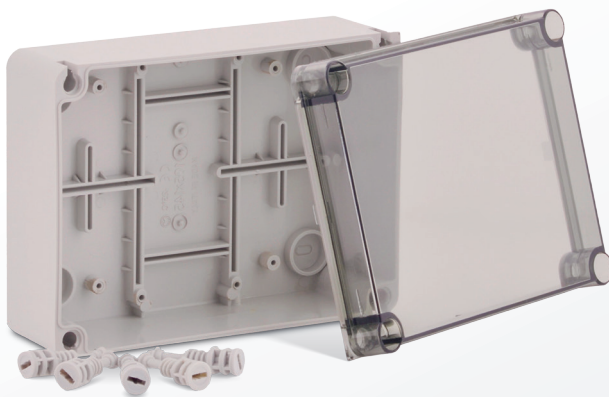
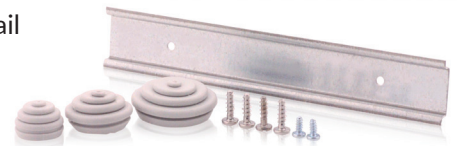


ACCESSORIES (optional, order separately)

- Wall mounting set
- Mounting plate

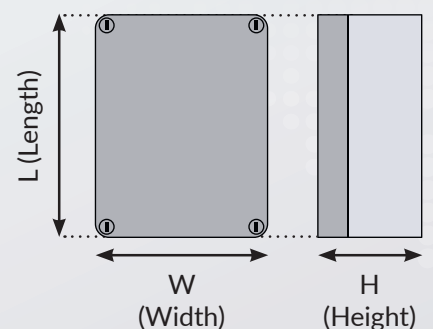


- Mounting rail



DIMENSIONS - Transparent

MODEL	OUTER L x W x H (mm)	WEIGHT (kg)	IMPACT RESISTANCE
BXPSSR501	190 x 140 x 75	0,39	IK07
BXPSSR511	240 x 190 x 90	0,55	IK07
BXPSSR521	300 x 220 x 120	1,15	IK06
BXPSSR531	380 x 300 x 120	1,60	IK06
BXPSSR541	460 x 380 x 120	2,23	IK06





Breuell Ingenieurbüro GmbH

📍 Grützmühlenweg 46 - 22339 Hamburg

☎ (+49) 040-538092-255

☎ (+49) 040-538092-85

✉ info@boxexpert.de

🌐 www.boxexpert.de

